



## ABOUT US

The Whitehall Borough Historical Society seeks to preserve and promote the vibrant history of Whitehall Borough, Pennsylvania, while fostering the knowledge and appreciation of that history among its members and the general public. The Historical Society's goal is to engage in research and provide exhibits, publications and interpretive projects for the benefit of the borough and beyond.

## WHITEHALL HISTORY

On January 5, 1948 Whitehall seceded from Baldwin Township to become an independent municipality in an effort to have better service and zoning for the community.

Whitehall has been a home-rule community since 1975.

This robust and history-rich community, with its neighborhoods, schools, churches, parks and businesses, serves 15,064 residents.  
*(2020 Census)*



Whitehall Borough Building  
100 Borough Park Drive  
Pittsburgh PA 15236

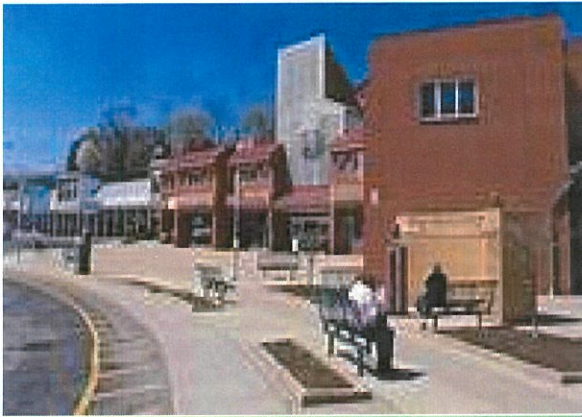


*Whitehall House*



Whitehall Borough  
Historical Society





## **SUPPORT YOUR HISTORICAL SOCIETY!**

Your contribution will help the Historical Society preserve our great heritage, and provide events celebrating our history.

The Society meets monthly at the Borough Building.

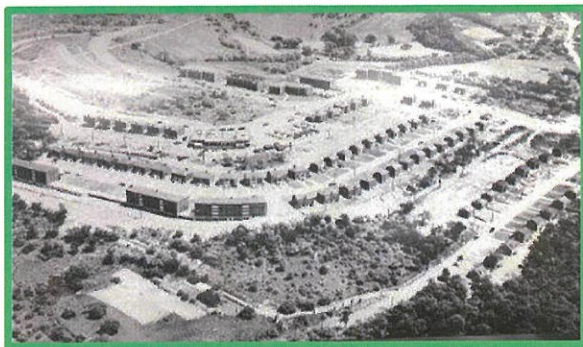
**Contact us at:**  
P.O. Box 10911  
Pittsburgh PA 15236  
[whitehallhistory100@gmail.com](mailto:whitehallhistory100@gmail.com)  
for more information.



*Old Borough Building-Police Department*



*First Borough Council*

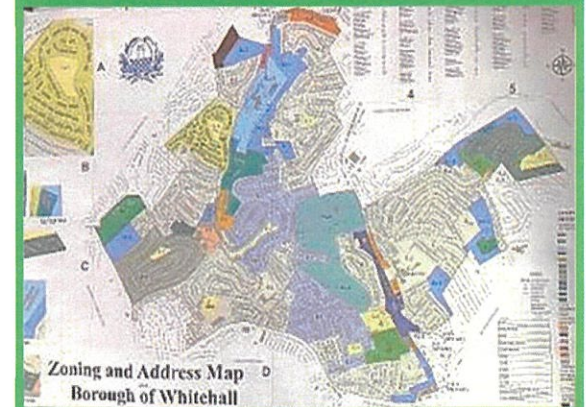


*Prospect Park Pre-1948*

## **ARTIFACT MANAGEMENT**

Members of the community are encouraged to donate or loan to the Society any artifacts, documents, memorabilia and photographs that may be of interest or enhance the understanding of the history of the Borough.

Policies for such acquisition of materials by the Society are available upon request.



**STRONG ROOTS**

**BRIGHT FUTURE**